

## What is XTC 2 Clip?

**XTC 2 Clip** is a specialized device for servicing HTC phones. It consists of a main device with a flex having a microsd emulator on its end.

### Main functions:

- Sim unlock or lock a phone to a specified network with your own unlock code
- Repair IMEI (IMEI 2 for dual sim phones)
- Change CID (**C**ountry **I**D used for firmware region lock)
- Repair MEID (and MEID2 for dual sim phones) (for CDMA area phones)
- Change security level (S-ON/S-OFF, allows you to run unsigned code, perform service actions, etc)
- Many other functions you may need time-to-time.

## How does it work?

In order to use its functions – you have to connect it to the SD card port of your phone. The SD port may be located on the left, right or rear (battery) part of your phone. If your phone has no SD port – you must use **Y-cable**.



(PICTURE 1: Y-CABLE EXAMPLE)

---

## Operation mode

There are 2 operation mode for XTC 2 Clip device:

- **direct** – when the phone is in fastboot mode & connected to the PC, using the XTC 2 Clip software
- **offline** – when using a SIM Lock menu of bootloader. To use the offline mode you must first save special service files on XTC 2 Clip device.

## Direct mode

### To use direct mode:

1. Insert XTC 2 Clip device into phone SD card slot, power on phone into bootloader mode using “vol-down + pwr” button. And select “**FASTBOOT**” option.

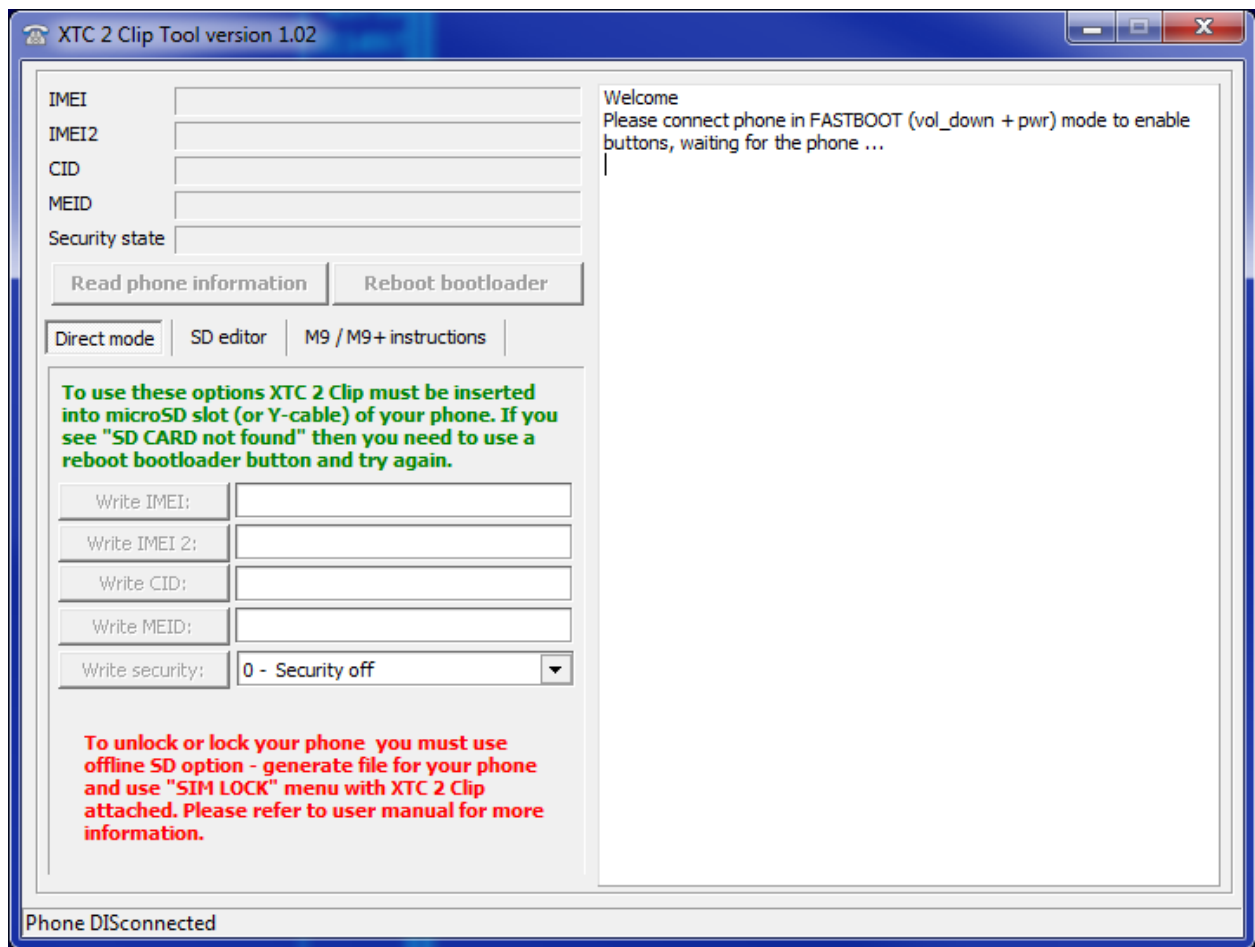
**IMPORTANT!** If your phone doesn't go to Fastboot mode, you probably have “Fast boot” mode enabled. To disable it – power on the phone in normal mode, go to “Settings” > “Power” and uncheck the “Fast boot” option”

2. Connect phone to your PC.
3. Run the XTC 2 Clip software and select “*Direct mode*”.
4. Choose the desired operation and press corresponding button.

**SIM LOCK FUNCTION IS NOT AVAILABLE IN DIRECT MODE! PLEASE USE OFFLINE MODE FOR SIM LOCK MANAGEMENT.**

### Important

**IF YOU GET A 'SD CARD NOT FOUND' MESSAGE – IT MEANS THAT THE XTC 2 CLIP WAS CONNECTED AFTER PHONE WAS POWERED ON. IN THIS CASE PRESS THE 'REBOOT BOOTLOADER' BUTTON AND REPEAT THE DESIRED OPERATION.**



(PICTURE 2 – DIRECT MODE EXAMPLE)

## Offline mode

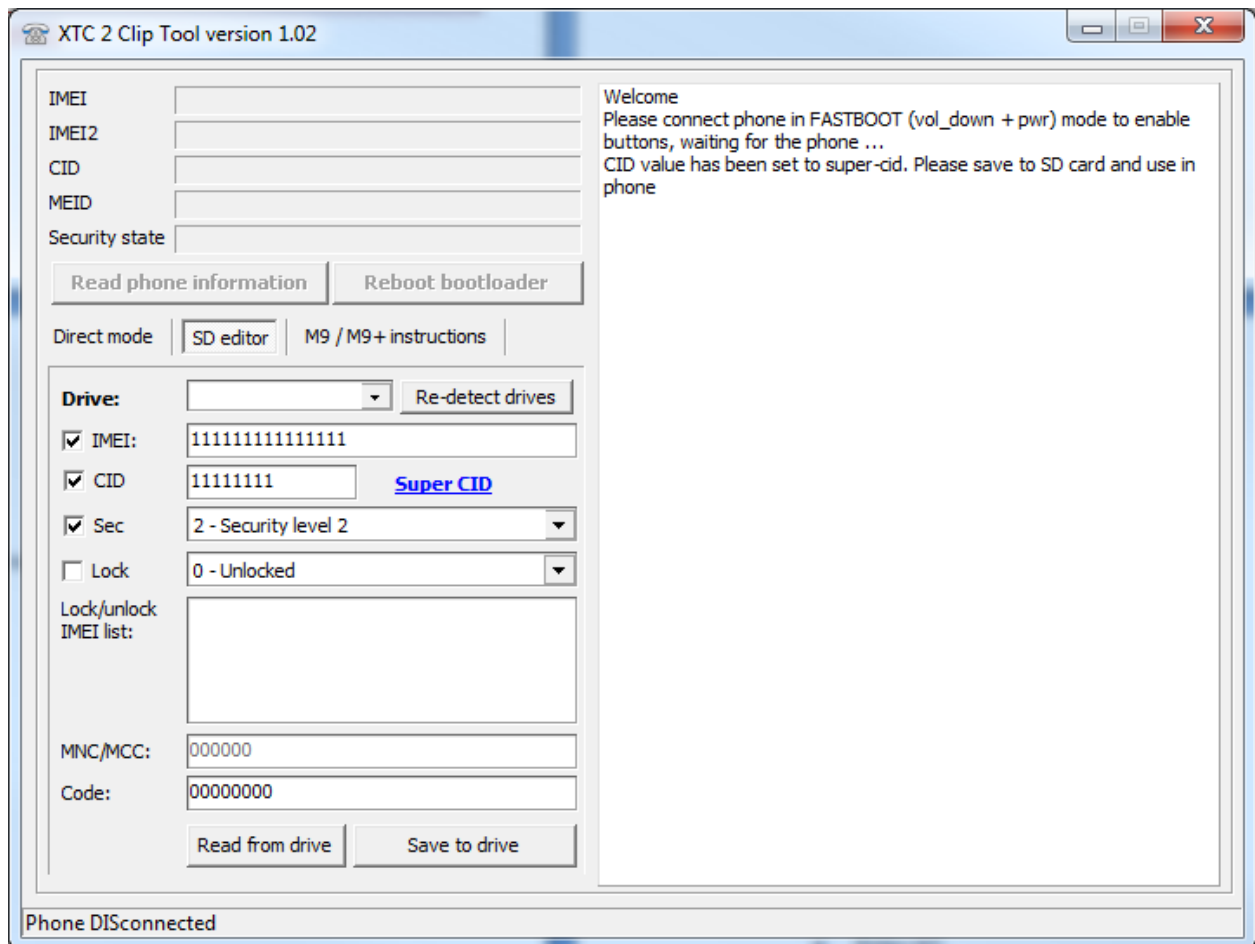
### How to prepare service files on XTC 2 Clip device:

1. Connect the XTC 2 Clip device to your PC using any compatible microsd card reader.
2. The device will be detected as a flash/disk drive.
3. Run the *XTC 2 Clip software* and select “SD editor” tab.
4. If you have previously had your service files on your device, please press “Read from drive” button, otherwise you will lose all your existing files once used the “Save to drive”.
5. Select the options you need and press “Save to drive”
6. Insert XTC 2 Clip device into phone SD card slot, power on phone into bootloader mode using “vol-down + pwr” button and select “SIMLOCK” option.

**IMPORTANT!** If your phone doesn't go to Fastboot mode, you probably have “Fast boot” mode enabled. To disable it – power on the phone in normal mode, go to “Settings” > “Power” and uncheck the “Fast boot” option”

THE SIM LOCK SETTINGS ARE BOUND TO THE PHONE'S IMEI. IN OTHER WORDS, IF YOU NEED TO LOCK/UNLOCK A PHONE, YOU MUST ADD PHONE'S IMEI TO SPECIAL 'CONFIG.DAT' FILE USING THE 'SD EDITOR' TAB. OTHERWISE YOU WILL GET 'IMEI CHECKING FAIL' AND YOUR PHONE WILL NOT BE UNLOCKED/LOCKED!

CID, IMEI, SECURITY FLAG SETTINGS ARE NOT BOUND, YOU CAN USE IT ON AS MANY PHONES AS YOU WISH WITHOUT HAVING TO CONNECT THE DEVICE TO PC EACH TIME.



(PICTURE 3 – SD EDITOR EXAMPLE)

## Offline mode – manual files creation

It may happen that you need to create service files on a PC with no XTC 2 Clip software installed. In this case you can manually create the files for:

- IMEI change/repair – **imei.txt**
- Security level change – **sf.txt**
- CID change – **cid.txt**

Please note, that unlike mentioned files, SIM lock configuration '**config.dat**' is a binary file, and you may need to use a hex editor to create it. Therefore it's recommended that you use an XTC 2 Clip software to create/manage this file.

### TO CREATE/MODIFY THE FILES YOU CAN USE SIMPLE 'NOTEPAD' SOFTWARE

#### *IMEI file*

To modify the phone's IMEI you need to create a text file called '**imei.txt**' in the root folder of a XTC 2 Clipdevice disk drive. Once created, put inside a 14 digits of a new IMEI, for example: 12345678901234

#### *SF file*

To modify the phone's security level (S-ON/S-OFF) you need to create a text file called '**sf.txt**' in the root folder of a XTC 2 Clip device disk drive. Once created, put inside a number that corresponds to the desire security level:

- **0** means security OFF (S-OFF)
- **1** means (S-ON level 1)
- **2** means (S-ON level 2)
- **3** means (S-ON level 3, highest)

#### *CID file*

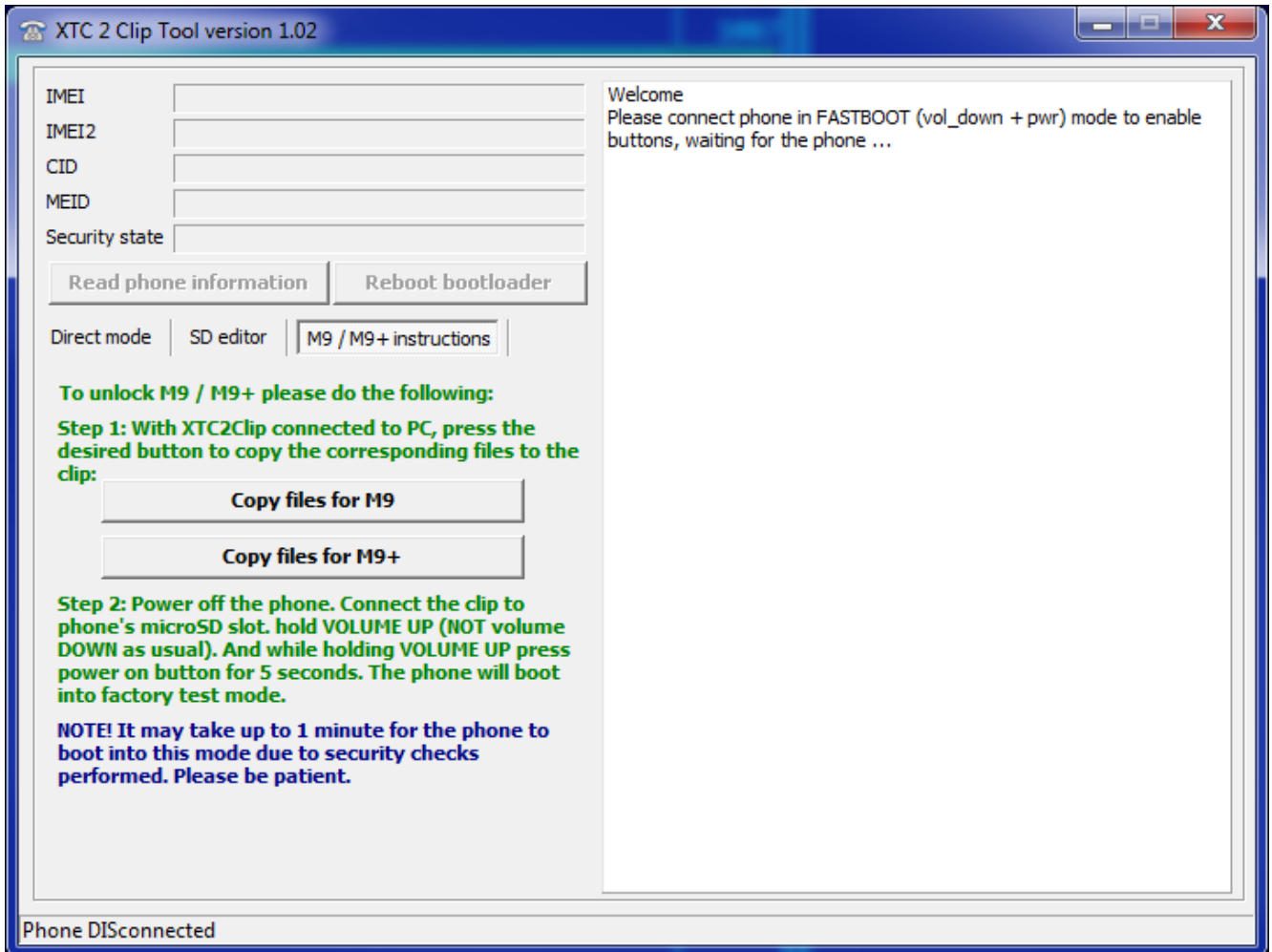
To modify the phone's CID you need to create a text file called '**cid.txt**' in the root folder of a XTC 2 Clip device disk drive. Once created, put inside a 8 symbols of a new CID, for example: HTC\_001

## M9 and M9+ special instructions

Since the release of M9 HTC has changed the way to service phones. Although some commands are still available in “fastboot” (now called “download mode”), service functions were moved to special “factory mode”, which is accessible using VOL UP + POWER ON (**NOT** VOL DOWN as for fastboot/download mode).

Warning! To be able to run the new factory mode you must have activated clip connected to the phone before trying to enter factory mode!

The following option is for **unlock** of M9 and M9+ and for IMEI change/repair on M9+ only.



### *To unlock M9 or M9+:*

1. Copy files to clip using “Copy files for M9” or “Copy files for M9+” (if you haven’t done it before). You can have files for both M9 and M9+ at the same time.
2. Follow the steps from the M9 / M9+ instructions.

### *To change IMEI on M9+:*

1. Save “imei.txt” with the desired IMEI like usual using SD editor.
2. Copy files to clip using “Copy files for M9” or “Copy files for M9+” (if you haven’t done it before). You can have files for both M9 and M9+ at the same time.
3. Follow the steps from the M9 / M9+ instructions.

## Legacy phones

The following phones are known as “legacy”

- Desire HD [ace]
- Wildfire [buzz]
- Desire Z (G2/A7272) [vision]
- Salsa [icon\_g]
- Legend A6363 [legend]
- Desire S [saga]
- Rhyme [bliss]
- ChaCha [chacha]
- Sensation XL [runnymede]
- Other phones (for a complete list please visit the link below)

Please find a complete manual how to service them here:

<http://forum.gsmhosting.com/vbb/f961/legacy-phones-manual-ace-buzz-vision-icon-legend-saga-bliss-chacha-run-nymede-1967505/>

## Supported models

XTC 2 Clip is supposed to support the whole range of HTC phones, however the features may differ from model to model.

**Please visit our site: [xtc2.net](http://xtc2.net) for an updated list of supported models.**

**Web: <http://xtc2.net>**

**Email: [info@xtc2.net](mailto:info@xtc2.net)**